



Title: i-SPEED 7 i-CHEQ 360 STATUS MONITORING SYSTEM
Date written: December 2017
Author: Jane Widzinski
Keywords: i-SPEED 7, status codes, i-CHEQ, LEDs, identifying cameras

Overview

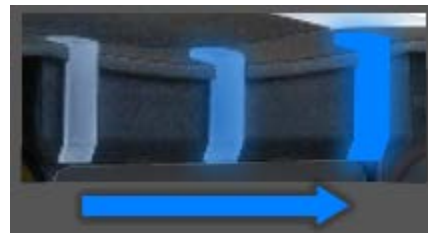
i-SPEED 7 series cameras feature a convenient and easy to use system to indicate camera status. i-CHEQ 360 enables three LEDs mounted on the top rear panel of the camera to change color and pattern depending on the function the camera is currently performing. The i-CHEQ indicators can be viewed and controlled via several functions within the PC software.

i-CHEQ 360 Status Codes

Status codes are listed below. These codes can also be viewed in the PC software Help menu or by touching the Help button on the CDUe.

Camera starting, power on

Sweeping blue



Camera live streaming

Flashing magenta



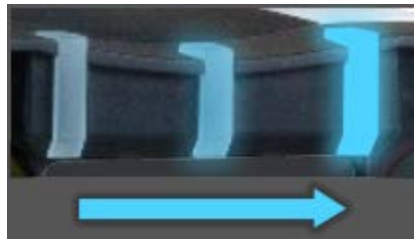
Camera trigger test

Solid magenta



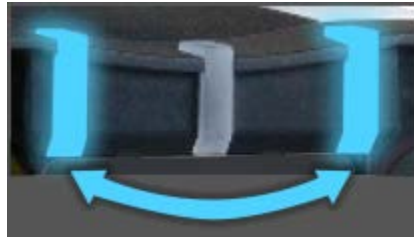
Recording – buffer not full

Sweeping cyan



Recording – triggered

Alternating flashing cyan



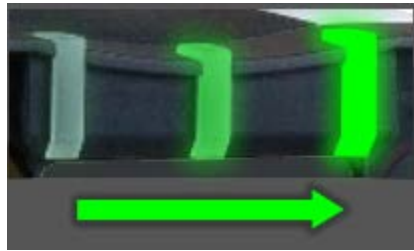
Recording ended

Solid cyan



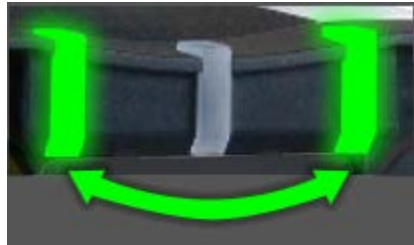
Recording – circular buffer

Sweeping green



Recording triggered – circular buffer

Alternating flashing green



Recording ended – circular buffer

Solid green



Saving recording

Sweeping magenta



Ejecting xSSD – Do Not Remove xSSD

Flashing red (left LED)



Ejecting xSSD – Safe to Remove xSSD

Solid green (left LED)



Camera power button pressed

Flashing white



Camera powering down

Sweeping white



Camera error

Flashing red



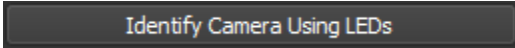
Status Codes on the Connect Screen

The Connect screen displays the i-CHEQ status codes for each camera in the current layout as part of the information displayed in the icon representing each camera, as shown below.



Identifying cameras using LEDs

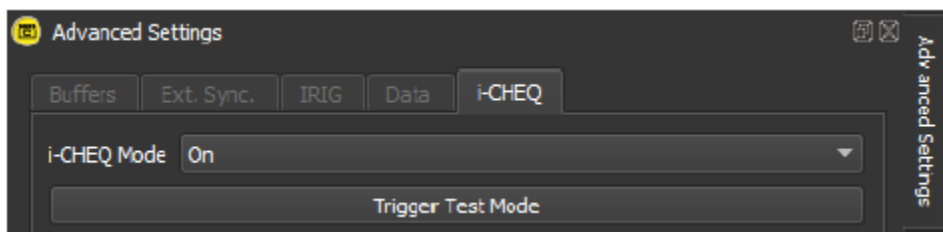
This function, available in the Camera Information panel on the Connect window, flashes the LEDs on the camera in a red/green/blue cycle for identification purposes in a multiple camera setup.

A dark grey rectangular button with the text "Identify Camera Using LEDs" in a light grey font.

i-CHEQ Mode

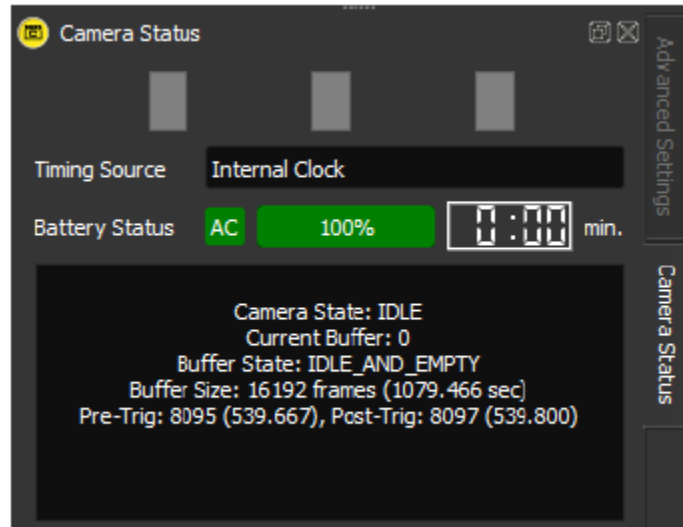
Display of the i-CHEQ status codes may be controlled from the Advanced Settings panel on the Capture screen. There are three options for i-CHEQ mode:

- **On** – Displays all i-CHEQ indicators
- **On without stream indicator** – Displays all indicators except the live stream indicator (flashing magenta).
- **Off** – Turns off all i-CHEQ indicators.



Camera Status

The status of the camera currently in use is shown in the Camera Status panel on the Capture screen. The three rectangles at the top of the panel display the i-CHEQ status codes, as shown below.



Capture Window

The Capture screen also displays the i-CHEQ indicators and camera sync status at the top of the window, as shown below.

